

## 340 CALIBER A-CNC-PP / 34x1,1



340



350x340



350x260



3x400V 50 Hz



3,0



20-100



4600x34x1,1



1500

Lmin  
2662

Lmax  
3122

Bmin  
1308

Bmax  
1590

Hmin  
1860

Hmax  
1943

V  
800



STANDARD    OPTION

340-C-F

340-C-BSF

LED

340-C-PCK

PEGAS ASR

PEGAS ARP

PEGAS RZP

PEGAS ARN

340-RTS-A

340-NPH

340-IRP

PEGAS BRP

ZAPSI

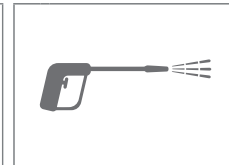
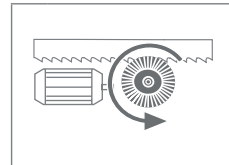
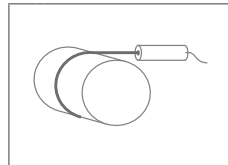
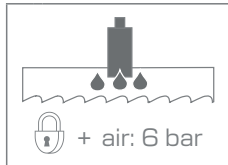
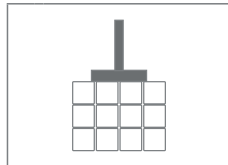
340-C-HP-A

MINILUBE 27-34

LASER LINE

340-C-ECK

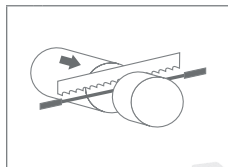
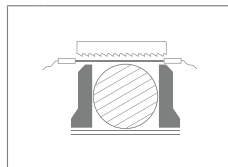
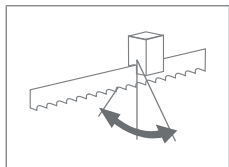
WGUN2



340-C-KKR

340-ABP

340-ATB



340-LHS

340-C-VTT

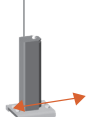
RDSF-400



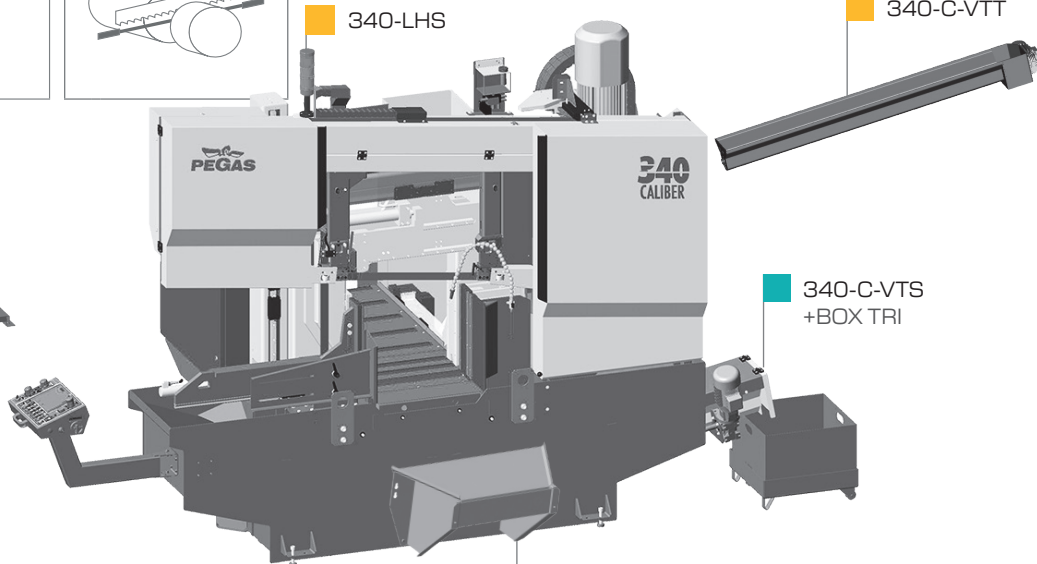
DMV-400



RBR1-400



RBR1-400



340-GPZ-500

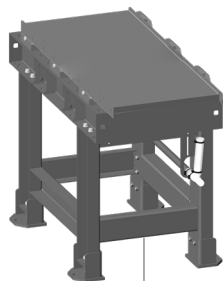
V1-400



RDH-450



RTA-1000-400



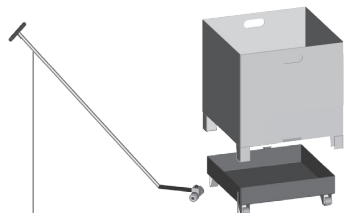
RDT1-1000-400



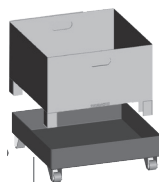
RDT1-2000-400



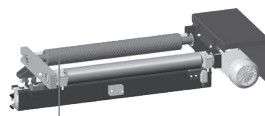
BOX-TAH



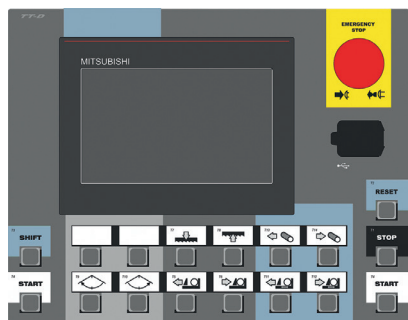
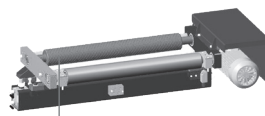
BOX-PCS



BOX-TRI



VZM1-400



CONTROL PANEL: MITSUBISHI (A-CNC)

## 340 CALIBER A-CNC-PP

- výrobce si vyhrazuje právo provádět změny technických údajů, technické údaje odpovídají 1.1.2025 / producer has the right to make changes of technical data, technical data are valid on 1.1.2025

- pila na fotografii není vždy v základním provedení, uvedené rozměry odpovídají stroji v základním provedení / the machine in the picture is not always in the basic version, mentioned diameters are for machine in basic version

\* doporučená hodnota. Při překročení doporučeného maximálního průměru není možné garantovat výkon pilového pásu!

/ recommended value. The blade performance cannot be guaranteed when the recommended diameter is exceeded!

☒ - řezání svazků bez horního přitlačení / cutting of the bundle without top clamping



PEGAS - GONDA s.r.o.  
Čs.armády 322, 684 01 Slavkov u Brna,  
CZECH REPUBLIC

www.pegas-gonda.cz  
00420-544 221 125 (126) | pegas@gonda.cz